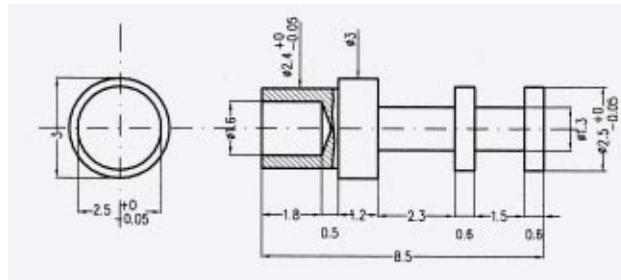


TORRETTE PER CIRCUITO STAMPATO/ TURRETS FOR PRINTED CIRCUIT

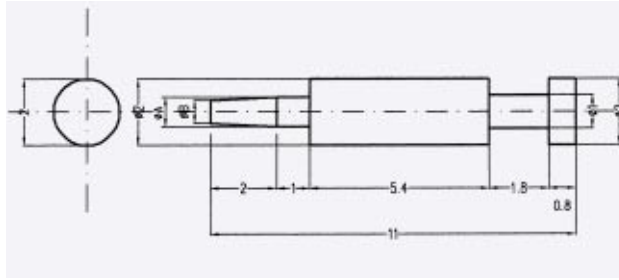
CAT 1190



| n. cat | trattamento | materiale |
|--------|-------------|-----------|
| 1190.1 | stagnato | ottone |
| 1190.2 | argentato | ottone |
| 1190.3 | dorato | ottone |

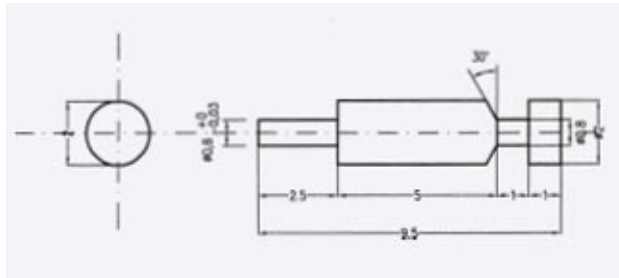
CAT 1204





| n. cat | trattamento | A | B | materiale |
|----------|-------------|-----|-----|-----------|
| 1204.1 A | stagnato | 1.3 | 1.1 | ottone |
| 1204.2 A | argentato | 1.3 | 1.1 | ottone |
| 1204.3 A | dorato | 1.3 | 1.1 | ottone |
| 1204.1 B | stagnato | 0.9 | 0.7 | ottone |
| 1204.2 B | argentato | 0.9 | 0.7 | ottone |
| 1204.3 B | dorato | 0.9 | 0.7 | ottone |

CAT 1205



| n. cat | trattamento | materiale |
|--------|-------------|-----------|
| 1205.1 | stagnato | ottone |
| 1205.2 | argentato | ottone |
| 1205.3 | dorato | ottone |