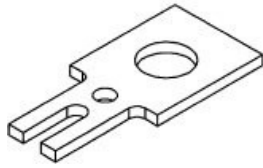
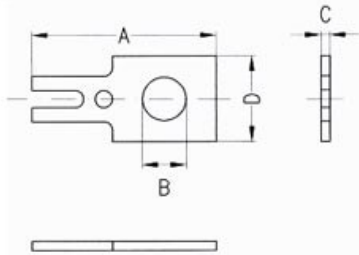


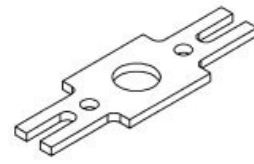
TERMINALI / TERMINALS



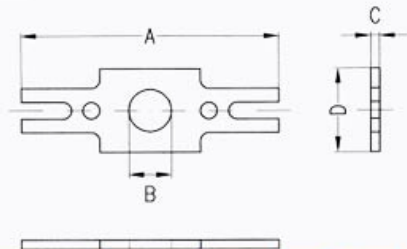
TIPO B /TYPE B



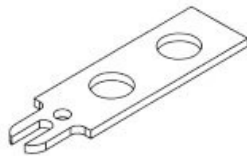
catalogo	tratt.	A	B	C	D
200/B	Stag.	16	3.8	0.8	8.1
300/B	a caldo	19	3.8	0.8	8.1



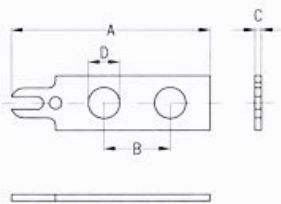
TIPO C/ TYPE C



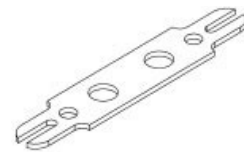
catalogo	tratt.	A	B	C	D
200/C	Stag.	23	3.8	0.8	8.1
300/C	a caldo	29.6	3.8	0.8	8.1



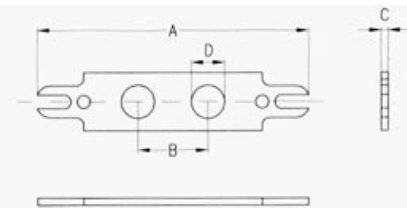
TIPO B /TYPE B



catalogo	tratt.	A	B	C	D	E
100/B	Stag. a caldo	17.8	6.5	0.5	2.3	4.8
500/B		24	8	0.8	3.8	7.3
600/B		29	10.7	0.8	3.8	8.1
700/B		36.5	12.7	0.8	4.2	10.8



TIPO C/ TYPE C



catalogo	tratt.	A	B	C	D	E
100/C	Stag. a caldo	24.8	6.5	0.5	2.3	4.8
500/C		31	8	0.8	3.8	7.3
600/C		38	10.7	0.8	3.8	8.1
700/C		48	12.7	0.8	4.2	10.5



TIPO D /TYPE D



catalogo	tratt.	A	B	C	D	E
100/D	Stag. a caldo	16	1.3	0.5	2.3	4.7
200/D-500/D		17	2.3	0.8	3.8	7.5
300/D-600/D		22.5	2.5	0.8	3.8	8.8
400/D-700/D		24.5	3.1	0.8	4.3	11