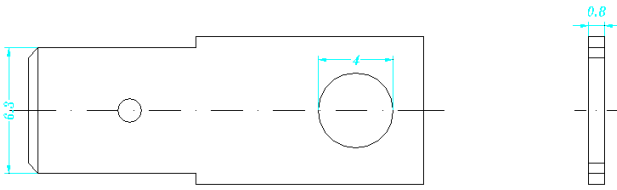


Componenti PG 10

Components PG 10

Faston singolo innesto / Unipolar



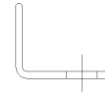
Tipo / Type
G



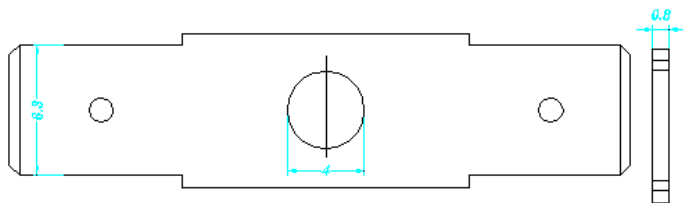
Tipo / Type
H



Tipo / Type
I



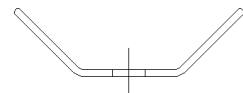
Faston doppio innesto / Bipolar



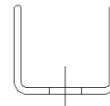
Tipo / Type
L



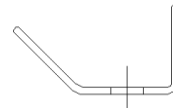
Tipo / Type
O



Tipo / Type
P



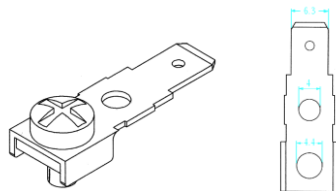
Tipo / Type
R



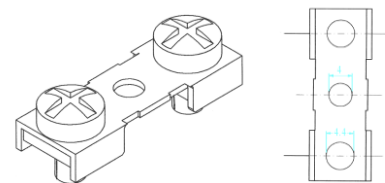
Vite-Faston / Screw-Faston

Vite-Vite / Screw-screw

Tipo / Type
X



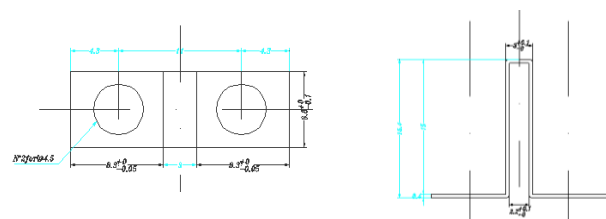
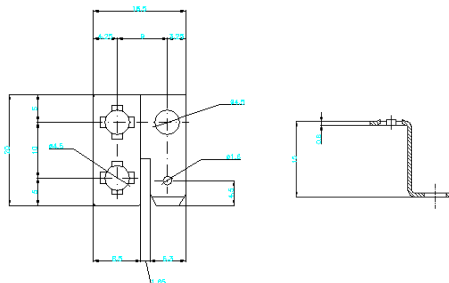
Tipo / Type
Y



Messa a terra / Ground bonding jumper

Cavallotto cc10 / Jumper bar cc10

Tipo / Type
S



B.Components S.R.L.



CERT. N. 9170.BCOM